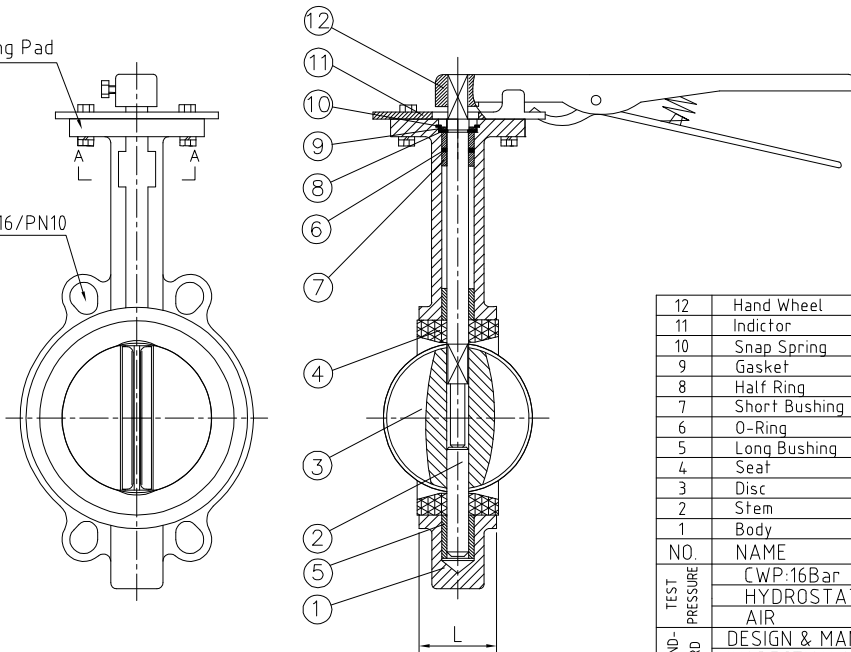


ISO 5211 Mounting Pad

150LB/125LB/PN16/PN10



SIZE	DN	L	Between Flange
2"	50	42	PN16/PN10/150LB/125LB
2 1/2"	65	44.7	PN16/PN10/150LB/125LB
3"	80	45.2	PN16/PN10/150LB/125LB
4"	100	52.1	PN16/PN10/150LB/125LB
5"	125	54.4	PN16/PN10/150LB/125LB
6"	150	55.8	PN16/PN10/150LB/125LB
8"	200	60.6	PN16/PN10/150LB/125LB

NO.	NAME	MATERIAL	QTY
12	Hand Wheel	Assembly	1
11	Indicator	SS	1
10	Snap Spring	SK7	1
9	Gasket	13Cr	1
8	Half Ring	13Cr	1
7	Short Bushing	PTFE	2
6	O-Ring	EPDM	1
5	Long Bushing	PTFE	2
4	Seat	EPDM	1
3	Disc	A351 CF8M (SS316)	1
2	Stem	A276 SS416	1
1	Body	Ductile Iron A536 + Epoxy	1

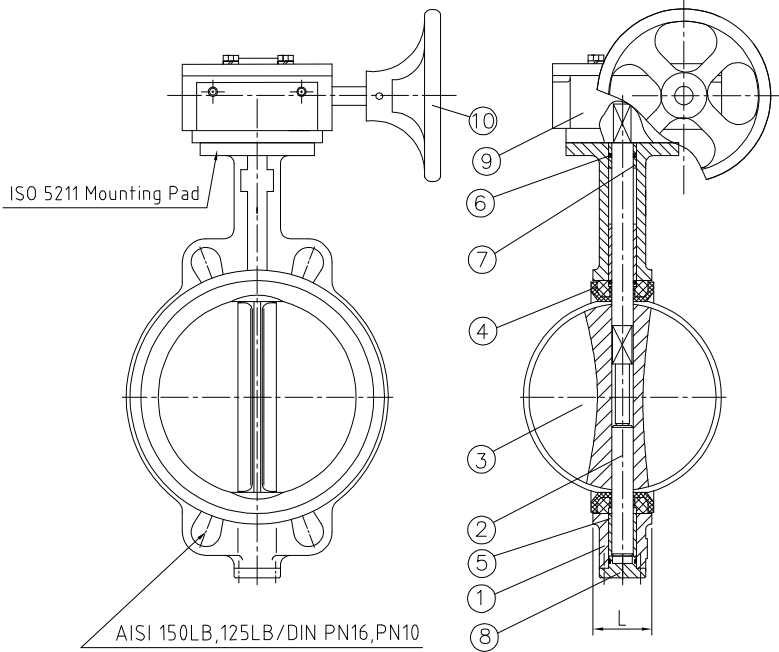
TEST PRESSURE	CWP:16Bar		SHELL	SEAL
	HYDROSTATIC	24 bar	6 bar	17.6 bar
AIR	6 bar		6 bar	
STANDARD	DESIGN & MANUFACTURE	API 609		
	INSPECTION & TEST	API 598		
	END STANDARD	AISI 150LB, 125LB / DIN PN16, PN10		
	FACE TO FACE	API 609		

TITLE: HANDLEVER CONCENTRIC BUTTERFLY VALVE
NPS 2"~8" - 150LB/125LB/PN16/PN10 - WAFER

1	Nondestructive Testing		
1.1	Pressure Test	API 598	Yes
1.2	Chemical composition certification	Mandatory	Yes
1.3	Penetrant Test	All Body Surface	Yes
1.4	Magnetic particle testing	All Body Surface	Yes

APPROVED		DWG NO.	REV
CHECKED			
DRAWN			
DESIGNED		SCALE	UNIT mm





SIZE	DN	L	Between Flange
8"	200	60.6	150LB/125LB/PN16/PN10
10"	250	65.6	150LB/125LB/PN16/PN10
12"	300	76.9	150LB/125LB/PN16/PN10
14"	350	76.5	150LB/125LB/PN16/PN10

10	Hand Wheel	Ductile Iron	1
9	Worm Gear	Ductile Iron	1
8	Bottom Cover	Ductile Iron A536 + Epoxy	1
7	Short Bushing	Luberized Bronze	2
6	O-Ring	EPDM	3
5	Long Bushing	Luberized Bronze	2
4	Seat	EPDM	1
3	Disc	A351 CF8M (SS316)	1
2	Stem	A276 SS416	1
1	Body	Ductile Iron A536 + Epoxy	1

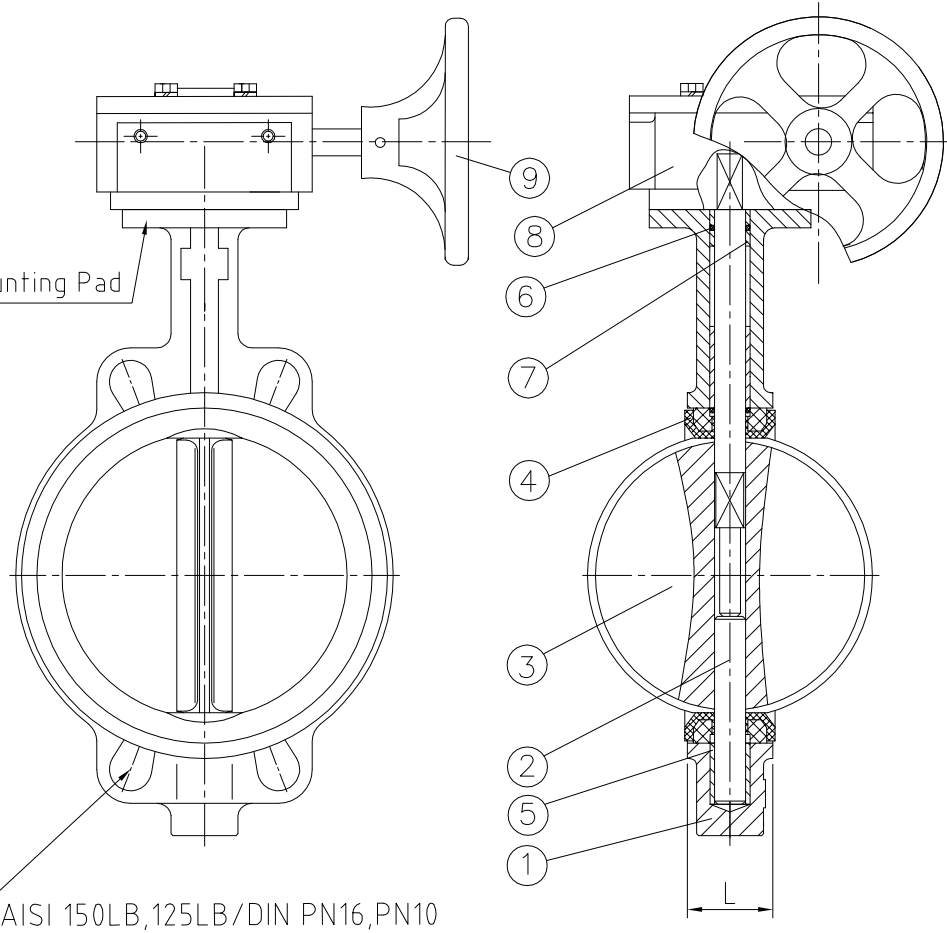
NO.	NAME	MATERIAL	QTY
TEST PRESSURE	CWP:16Bar	SHELL	SEAL
	HYDROSTATIC	24 bar	17.6 bar
	AIR	6 bar	6 bar
STAND-ARD	DESIGN CODE	API 609	
	INSPECTION & TEST	API 598	
	END STANDARD	ASME 150LB, 125LB / DIN PN16, PN10	
	FACE TO FACE	API 609	

TITLE: GEAR OPERATION CONCENTRIC BUTTERFLY VALVE
NPS 8"~14" - 150LB/125LB/PN16/PN10 - WAFER

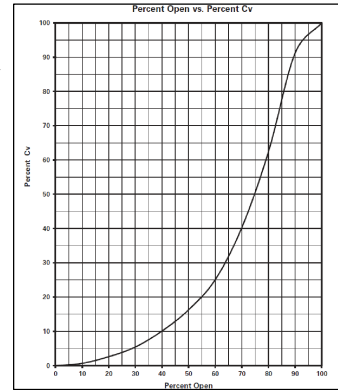
1	Nondestructive Testing		
1.1	Pressure Test	API 598	Yes
1.2	Chemical composition certification	Mandatory	Yes
1.3	Penetrant Test	All Body Surface	Yes
1.4	Magnetic particle testing	All Body Surface	Yes

APPROVED		DWG NO.	REV
CHECKED			
DRAWN			
DESIGNED		SCALE	UNIT mm





SIZE	DN	L	Between Flange	Cv (100%Open)	K Factor
16"	400	85.7	150LB/125LB/PN16/PN10	16390	0.30
18"	450	104.6	150LB/125LB/PN16/PN10	21705	0.29
20"	500	130.23	150LB/125LB/PN16/PN10	27910	0.28



1. Cv = Flow in GPM of water at 1 psi pressure drop.
 2. K = The resistance coefficient of the valve.
 The constant (K) can be used to determine the equivalent length of pipe.

NO.	NAME	MATERIAL	QTY
9	Hand Wheel	Ductile Iron	1
8	Worm Gear	Assembly	1
7	Short Bushing	PTFE	2
6	O-Ring	EPDM	3
5	Long Bushing	PTFE	2
4	Seat	EPDM	1
3	Disc	A351 CF8M	1
2	Stem	A276 SS416	1
1	Body	Ductile Iron A536 + Epoxy	1

TEST PRESSURE	CWP:16Bar	SHELL	SEAL
	HYDROSTATIC	24 bar	17.6 bar
	AIR	6 bar	6 bar

STAND-ARD	DESIGN CODE	API 609
	INSPECTION & TEST	API 598
	END STANDARD	ASME 150LB, 125LB / DIN PN16, PN10
	FACE TO FACE	API 609

TITLE: CONCENTRIC WAFER BUTTERFLY VALVE GEAR OPERATION
 NPS 16"~20" -150LB/125LB/PN16/PN10- WAFER - DI A536/SS316/EPDM

1	Nondestructive Testing		
1.1	Pressure Test	Mandatory	Yes
1.2	Chemical composition certification	Mandatory	Yes
1.3	Penetrant Test	All Body Surface	Yes
1.4	Magnetic particle testing	All Body Surface	Yes

APPROVED		DWG NO.	REV
CHECKED			
DRAWN			
DESIGNED		SCALE	UNIT mm

